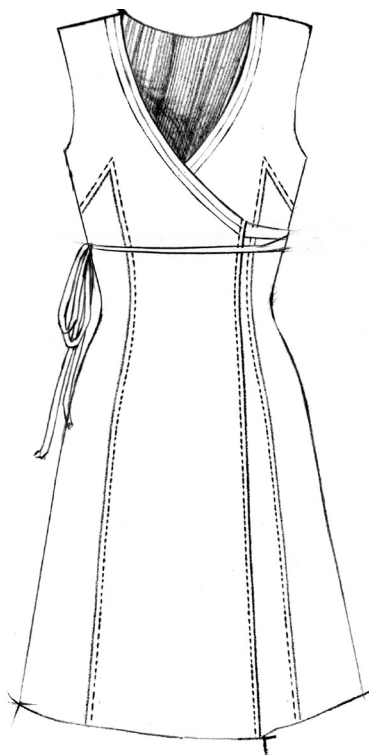




# The School of Making



## DIY WRAP DRESS INSTRUCTIONS

with tank, tunic, dress, mid-length dress and long dress lengths

For use with the Wrap Top/Tunic/Dress DIY Kit from The School of Making

# ALABAMA

CHANIN

[theschoolofmaking.alabamachanin.com](http://theschoolofmaking.alabamachanin.com)

© Alabama Chanin™ 2018

## 1. Baste Neckline and Armholes

To ensure that the neckline and armholes don't stretch while you're constructing your garment, use a single strand of all-purpose thread to baste around the neckline and curved edges of each piece.

## 2. Prepare for Construction

After completing embellishment, choose Inside or Outside Floating or Felled Seams (see our Alabama Studio Book Series) for your garment. You will pin with fabric's wrong sides together for seams visible on the outside of the garment or with fabric's right sides together for seams that are finished on the inside of the garment.

When pinning knit seams for construction, it is important to follow a method we call "pinning the middle." With right sides together for inside seams and wrong sides together for outside seams, start by pinning the top of your seam, and follow by pinning the bottom of your seam. After pinning both top and bottom, place one pin in the middle, between the two initial pins. Continue by pinning in the middle of each set of pins, until your seam is securely pinned and ready to sew.

## 3. Sew Front Panels

Pin one of your side front panels to one of your center front panels. Thread your needle, love your thread, and knot off. Using a straight stitch, sew the pinned pieces together, starting at the top edge of the seam and stitching 1/4" (6mm) from the fabric's cut edges down to the bottom edge. Be sure to begin and end your seam by wrap-stitching (see page 10 of this document) its edges to secure them. Repeat this process with the other side and center front panels. Fell each seam (if desired) towards the sides of your garment by folding over the seam allowances to one side and topstitching them 1/8" (3mm) from the cut edges, down the center of the seam allowances, using a straight stitch and wrap-stitching the seam.

## 4. Sew Back Panels

Pin your two center back panels together. Thread your needle, love your thread, and knot off. Using a straight stitch, sew the pinned pieces together, starting at the top edge of the seam and stitching 1/4" (6mm) from the fabric's cut edges down to the bottom edge. Be sure to begin and end your seam by wrap-stitching (see page 10 of this document) its edges to secure them.

Pin one of your side back panels to the newly-constructed center back panel. Thread your needle, love your thread, and knot off. Using a straight stitch, sew the pinned pieces together, starting at the top edge of the seam and stitching 1/4" (6mm) from the fabric's cut edges down to the bottom edge. Be sure to begin and end your seam by wrap-stitching its edges to secure them. Repeat this process with the other side back panel. Fell each seam (if desired) towards the sides of your garment by folding over the seam allowances to one side and topstitching them 1/8" (3mm) from the cut edges, down the center of the seam allowances, using a straight stitch and wrap-stitching the seam.



## 5. Sew Shoulder Seams

Next, pin the shoulder seams, with raw edges aligned, and sew the seams, starting at the top edge of the armhole and stitching 1/4" (6mm) from the fabric's cut edges across to the neckline. Begin and end each seam by wrap-stitching its edges to secure them. Fell your seams, if desired, towards the back of your garment down the middle of your seam allowance.

## 6. Add Sleeves (optional)

Add sleeves by pinning your cut sleeves to the Wrap Dress armholes with the right sides together for inside seams (or wrong sides together for outside seams) and matching the sleeve's edges with the edges of the front and back of the dress. Pin pieces together securely, working in excess fabric with pins. Use a straight stitch to attach sleeves and then fell the seams toward the sleeves, if desired.

## 7. Sew Dress Body and Ties at Side Seams

In this step, you will add one inner tie on the right side seam (if wearing) and one outer tie to the left side seam (if wearing).

Turn your dress wrong side out for inside seams or right side out for outside seams. For the inner tie in the right side seam, pin together front and back at the side seams. Before sewing the seam, place the short, flat edge of one 20" tie right-side-down approximately 5" down from the armhole, aligning the bottom corner of the tie with the princess seam in the front panel. Pin into place. Thread your needle, love your thread, and knot off. Using a straight stitch, sew the pinned pieces together, starting at the top edge of one seam and stitching 1/4" (6mm) from the fabric's cut edges down to the bottom edge. Be sure to begin and end the seam by wrap-stitching its edges to secure them. Fell each seam, if desired, towards the back of your garment by folding over the seam allowances to one side and topstitching them 1/8" (3mm) from the cut edges (down the center of the seam allowances and through the tie), using a straight stitch and wrap-stitching the seam.

For the outer tie in the left side seam, pin together front and back at the side seams with the short, flat edge of one 30" tie right-side-up between the two layers. The tie should be approximately 5" down from the armhole, with the bottom corner of the tie aligned with the princess seam in the front panel. Pin the three pieces into place. Thread your needle, love your thread, and knot off. Using a straight stitch, sew the pinned pieces together, starting at the top edge of one seam and stitching 1/4" (6mm) from the fabric's cut edges down to the bottom edge. Be sure to begin and end the seam by wrap-stitching its edges to secure them. Fell each seam, if desired, towards the back of your garment by folding over the seam allowances to one side and topstitching them 1/8" (3mm) from the cut edges (down the center of the seam allowances and through the tie), using a straight stitch and wrap-stitching the seam.



## 8. Add Facing and Ties to Front Panels

With the right front panel (if wearing) of your Wrap Dress lying right-side-up, lay the short, flat end of one 30" tie right-side-down on top of the upper edge of the front panel, aligning the edges and top corners of the two pieces. Place one facing right-side-down on top of the end of the tie and front panel, sandwiching the end of the tie between the facing and front panel and making sure to align the edges of your facing with the edges of the front panel. Pin into place. Thread your needle, love your thread, and knot off. Using a straight stitch, sew the three pinned pieces together, starting at the top edge of the center front and stitching 1/4" from the fabric's cut edges down to the bottom edge. Be sure to begin and end the seam by wrap-stitching its edges to secure them.

Once you have constructed this seam, gently steam the seam open with an iron, and then fold the facing back to create a clean-finished seam that encases the seam allowances, and pin it into place. Using a straight stitch, topstitch through all of the layers 1/4" from the front edge to secure the facing in place.

Repeat this process with the second facing and 20" tie on the opposite front panel.

## 9. Bind Neckline and Armholes

You will need approximately 60" of cut strips for the binding. Use your iron to press each binding strip in half lengthwise, with the wrong sides together, being careful not to stretch the fabric while pressing it.

For the neckline, fold one short end of the binding under 1/4" and press. Starting at one corner of one of the front panels and using the folded end of the binding strip, encase the neckline's raw edge inside of the folded binding, and baste the binding in place. When you reach the corner of the opposite front panel, trim the end of the binding approximately 1/4" – 1/2" past the edge of the front panel. Fold the end under that the folded edge of the binding strip aligns with the edge of the front panel. Using the stretch stitch of your choice, sew through all the layers and down the middle of the binding.

For the armholes, starting at the side seam, encase the armhole's raw edge inside of the folded binding, and baste the binding in place. Overlap the binding's raw edges at the side seam by about 1/2" (12mm), trimming any excess binding. Using the stretch stitch of your choice (see page 10), sew through all layers and down the middle of the binding. Repeat this process to finish the other armhole. Remove or simply break the neckline and armhole basting stitches by pulling gently on one end of the thread. If some basting stitches are embedded in the binding, it is fine to leave them in place since the thread is broken and the stitches will not restrict the fabric's stretch.



## Terms of Use

All designs © Alabama Chanin™ 2017, Alabama Chanin, Inc. These patterns are for personal home use. Patterns and projects are not to be produced for commercial purposes, nor are they to be made into items for sale. These patterns are copyright protected and reproduction of them is not permitted. Intended for use with projects from *Alabama Stitch Book*, *Alabama Studio Style*, *Alabama Studio Sewing + Design*, and *Alabama Studio Sewing Patterns*.

## About Alabama Chanin

Alabama Chanin as a concept and a company began as a DIY enterprise. Workshop programming was a natural outgrowth of the emerging DIY initiative growing around us. Our experiences showed us that face-to-face and hand-to-hand contact helped our customers better understand the what, why, and how of our making processes and the importance of an organic supply chain. And our business continued to grow. DIY offerings expanded, our workshop offerings became more diverse, and our Journal content added additional DIY instruction, stories, and ideas.

Educational programming is one of the fastest growing and most exciting aspects of our business model. So, as the opportunities to educate our team and our customers began to multiply, we realized that we should create a specific home for this knowledge.

To fully embrace our growing model, we have developed an overseeing body that will direct and innovate learning initiatives and educational programs: The School of Making. All of our current and developing educational and training initiatives fall under the umbrella of The School of Making. This arm of the Alabama Chanin Family of Businesses oversees all DIY, Makeshift, and workshop programming, format, and content; it acts as a researching body for new subjects and new ways of disseminating information. Our hope is that The School of Making can be an active voice in our local community, our state, and the making community, at large.

Visit The School of Making:  
[theschoolofmaking.alabamachanin.com](http://theschoolofmaking.alabamachanin.com)

Use the hashtags [#theschoolofmaking](#) and [#buildawardrobe2017](#) to join the conversation.

Share with us on:

Instagram – [www.instagram.com/theschoolofmaking](http://www.instagram.com/theschoolofmaking)

Twitter – [www.twitter.com/alabamachanin](http://www.twitter.com/alabamachanin)

Facebook – [www.facebook.com/VisitAlabamaChanin](http://www.facebook.com/VisitAlabamaChanin)

Tumblr – [alabamachanin.tumblr.com](http://alabamachanin.tumblr.com)

